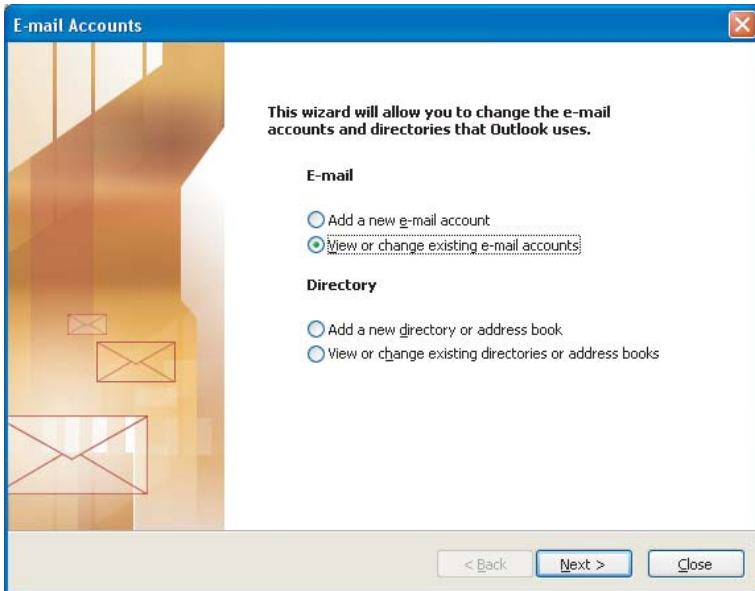
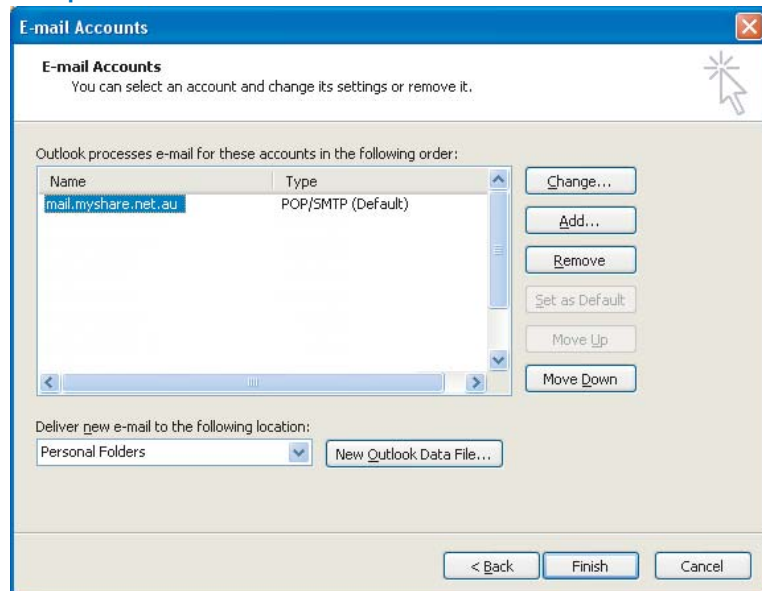


Setting up your MYSHARE email address

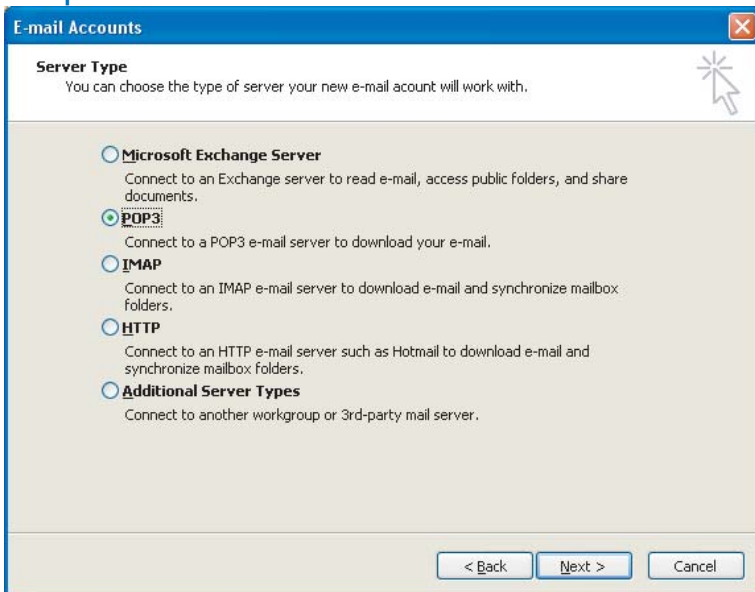
Step 1 - Open Microsoft Outlook
go to Tools / Email Accounts (see below) then click Next.



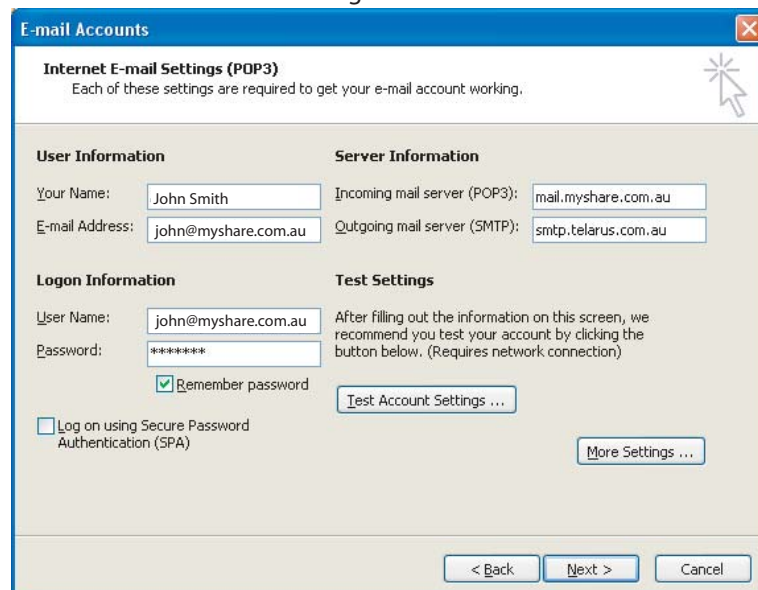
Step 2 - click Add



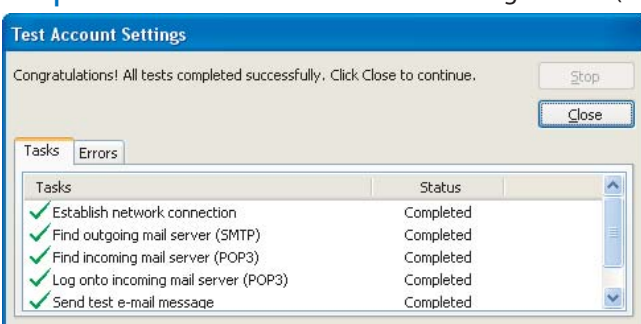
Step 3 - select POP3



Step 4 - enter in your Name, email address,
Incoming mail server = mail.myshare.com.au
Outgoing mail server = smtp.telarus.com.au
Username = yourname@myshare.com.au
*Password = the password you have *provided Myshare
Then click Test Account Settings



Step 5 - Your Test should come back looking like this (below)



*Password. Please call Myshare on 1300 653 795 if you haven't provided a password for your account.